

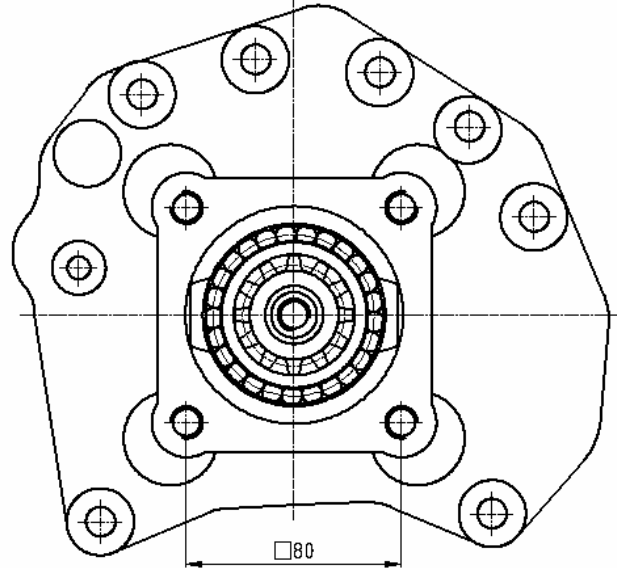
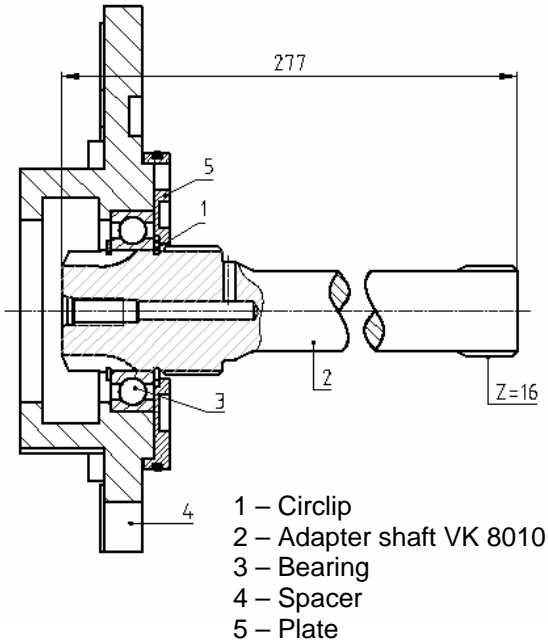
Adapter KIT to Power Take Offs

Ref. VK8010S
VK8010AM

Mercedes

G210 IT ; G211 IT ; G221 IT ; G240 IT ; G248 IT ; G260 IT
(G125 IT ; G155 IT ; G180 IT ; G200 IT Current flange produced after 1990)

Main Dimensions



Main Data

Continuous Torque (Nm)	300
Intermittent Torque (Nm)	420
Power (at 1000 r.p.m)	42 H.P. / 32 Kw
Mounting Position	Up
Pump Rotation	Left Hand
Weight (Kg)	6.5 Kg
Engine to PTO ratio	

G210	High: 1 : 1.03	Normal: 1 : 0.85
G211	High: 1 : 0.85	Normal: 1 : 0.71
G240	High: 1 : 1.24	Normal: 1 : 1.03
G260	High: 1 : 1.50	Normal: 1 : 1.24

Note:

For getting the correct ratio is necessary to multiply the above mentioned ratio by the internal ratio in all S6-90 releases.

Example:

Gearbox G260 Adapter Kit + ZF S6-90 (Ref. TF4002AMP) Internal Ratio 1:1.32

Final ratio: High .- 1 : 1.98 (1.5 x 1.32 = 1.98)

Normal .- 1 : 1.636 (1.24 x 1.32 = 1.636)

Note 2:

Adapter Kit is supplied without studs. Please use those that are provided with the PTO.

- jute Mercedes G260