

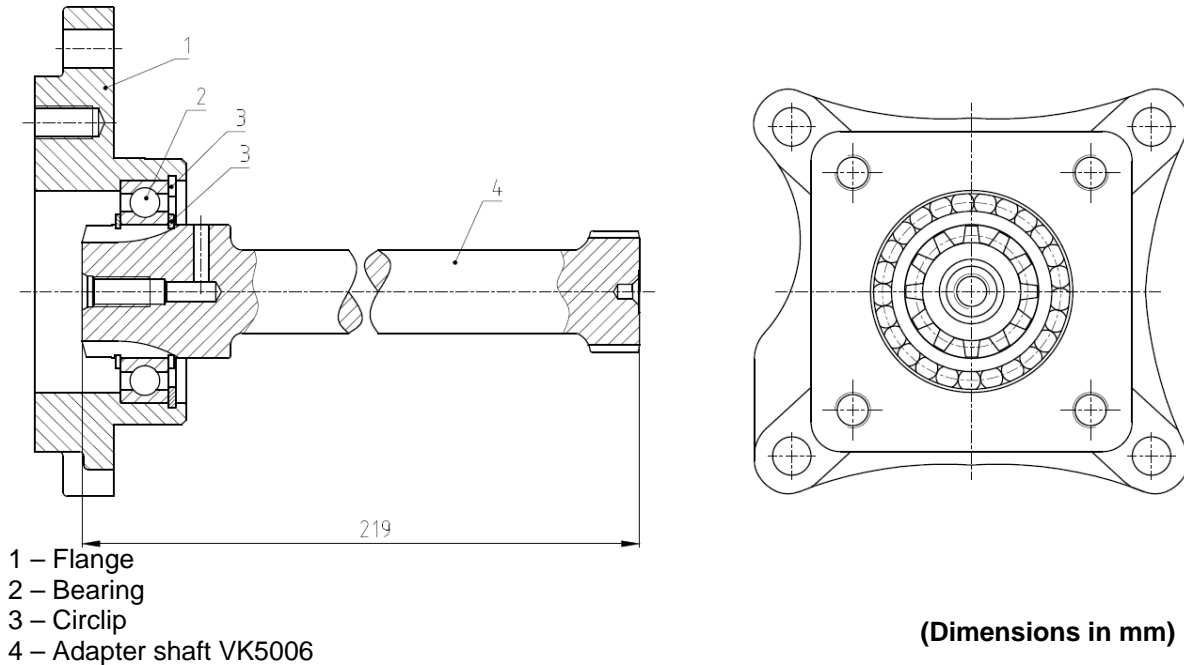


## ADAPTER KIT TO POWER TAKE OFFS VOLVO

Ref. VK5006S  
VK5006AM

AT 2412C; AT 2412AT; AT 2512 C; AT 2514; AT 2515C;  
AT 2812C; ATO 2512C; ATO 3112C

### Main Dimensions



### Main Data

<b>Continuous Torque (Nm)</b>	<b>600</b>	
<b>Intermittent Torque (Nm)</b>	<b>840</b>	
<b>Power (at 1000 r.p.m)</b>	<b>42 C.V. / 32 Kw</b>	
<b>Weight (Kg)</b>	<b>4.1</b>	
<b>Engine to PTO ratio</b>		
AT 2412C	High: .- 1 : 0.880	Normal: .- 1 : 0.700

#### Note 1:

For getting the correct ratio is necessary to multiply the above mentioned ratio by the internal ratio in all S6-90 releases.

#### Example:

Gearbox SR1400 ; SR1700 ; SR 1900 Adapter Kit + ZF S6-90 (Ref. TF4002AMP) Internal Ratio 1:1.32

Final ratio: High .- 1 : 1.162 (0.880 x 1.32 = 1.162)

Normal .- 1 : 0.924 (0.700 x 1.32 = 0.924)

#### Note 2:

Adapter Kit is supplied without studs. Please use those that are provided with the PTO.

- 4 screws UMB M12x35
- 4 washers
- 1 jute Volvo