

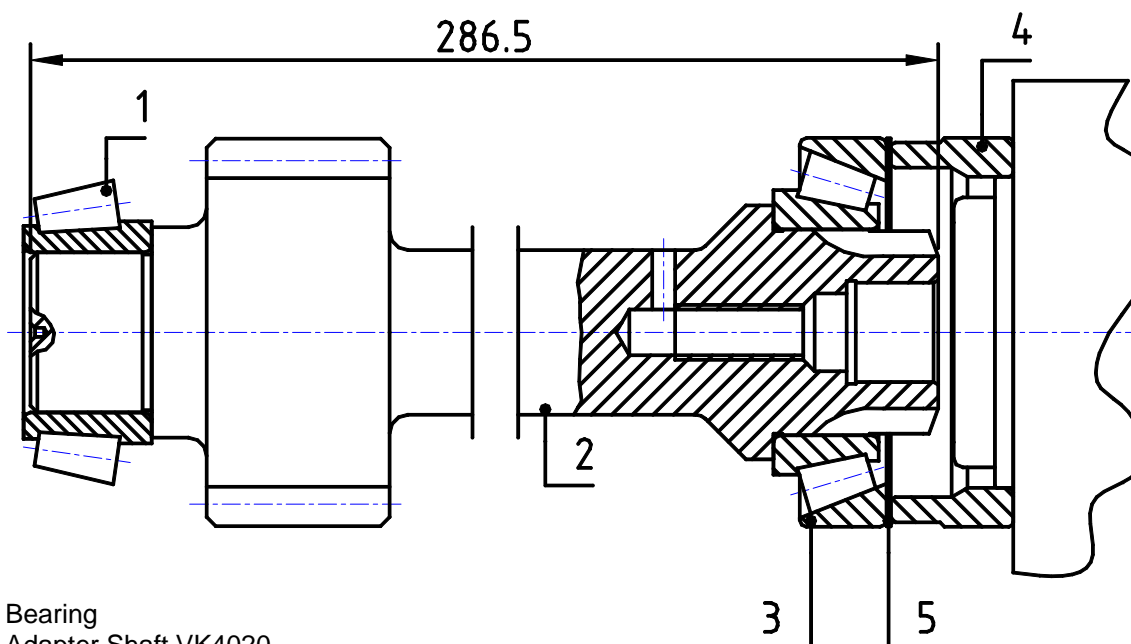
Adapter KIT to Power Take Offs

Ref. VK4020S
VK4020AM

ZF

9-S-109/12.92 ; 16-S-109/13.04 ; 16-S-109/13.30
16-S-109/13.42 ; 8-S-109

Main Dimensions



- 1 – Bearing
- 2 – Adapter Shaft VK4020
- 3 – Bearing
- 4 – Adapter Flange
- 5 – Adjustment Washer

Main Data

Continuous Torque (Nm)	300
Intermittent Torque (Nm)	420
Power (at 1000 r.p.m)	42 H.P. / 32 Kw
Weight (Kg)	4.7
Engine to PTO ratio	

9-S-109 / 12.92	- 1 : 0.720
16-S-109 / 13.30	High - 1 : 0.930
	Normal - 1 : 0.790
16-S-109 / 13.42	High - 1 : 0.930
	Normal - 1 : 0.790

Note 1:

For getting the correct ratio is necessary to multiply the above mentioned ratio by the internal ratio in all S6-90 releases.

Example:

Gearbox 9-S-109 / 12.92 Adapter Kit + ZF S6-90 (Ref. TF4002AMP) Internal Ratio 1:1.32
Final ratio: - 1 : 0.950 (0.720 x 1.32 = 0.950)

Note 2:

Adapter Kit is supplied without studs. Please use those that are provided with the PTO.