



Power Take Offs

Relation 1 : 1

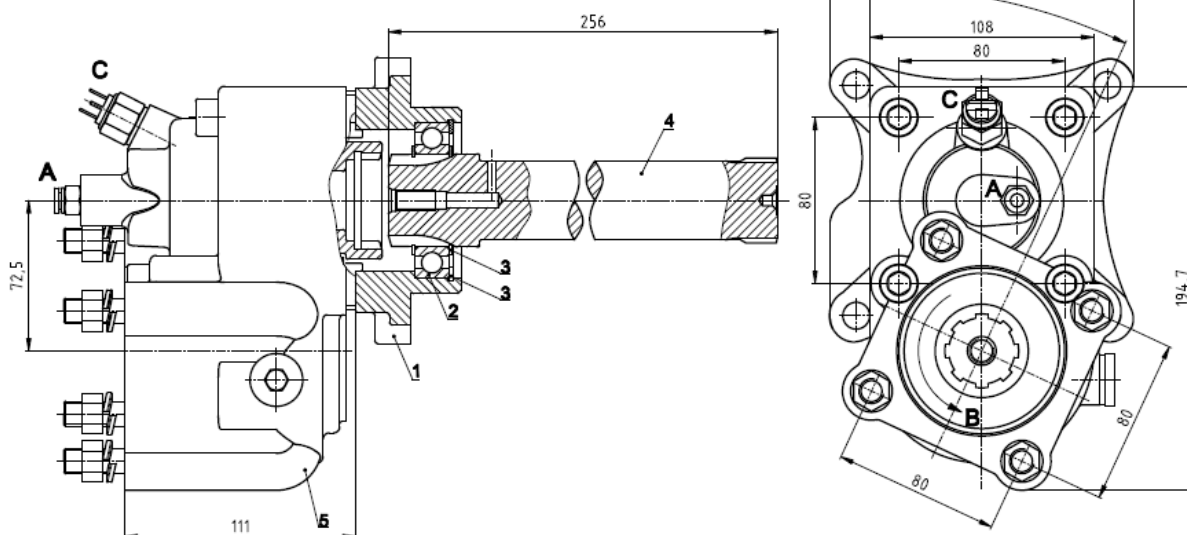
Ref. TF5006AMP

VOLVO

R1000; SR1000; R1400; R1700; SR1400; SR1700; SR1900;
SR2000; SR2400; SRO2400; VT1708; VT2009B; VT2014B; VT2214;
VT2412B; VT2514B; VTO2214B; VTO2514B; VT2814B; VTO2814B

To apply with Gear Pumps or with Piston Pumps

Main Dimensions



- A – Air connection
B – Sense of rotation
C – Option: Electric sensor with mechanical driving Ref. TF5006AMPS or TF5006AMPC
1 – Flange
2 – Bearing
3 – Circlip
4 – Adapter shaft VK5004
5 – TF4033AMP

(Dimensions in mm)

Main Data

Continuous Torque (Nm)	500
Intermittent Torque (Nm)	550
Power (at 1000 rpm)	69 cv / 51 kW
Mounting Position	Rear
Pump Rotation	Right Hand
Weight (kg)	16
PTO internal ratio	1:1
Indicative ratio from motor to PTO's output	
R 1000 ; R 1400 ; R 1700 ; VT1708 ; VT2009B	.- 1 : 0.700
SR 1400 ; SR 1700 ; SR 1900 ; VT2014B ; VT2214 ; VT2514B	High: .- 1 : 0.880 Normal: .- 1 : 0.700
SR 2000	High: .- 1 : 0.820 Normal: .- 1 : 1.650
SRO 2400	High: .- 1 : 1.030 Normal: .- 1 : 0.820
VT2412B	High: .- 1 : 0.903 Normal: .- 1 : 0.700
VTO2214B ; VTO2514B	High: .- 1 : 1.094 Normal: .- 1 : 0.880

ABER is constantly engaged in improving its products and, therefore, reserves itself the right to modify without any further notice the characteristics shown. The gear boxes are in constant change; therefore, ABER is not to be held responsible for any damage resulting from wrong application or application of outdated material.



ABER - Embraiaçgens e Comandos Hidráulicos - A. B. LDA

Rua Francisco de Almeida, Nº 30 – Vila Nova da Telha – 4470 MAIA - Portugal

Telephone: +351.22.9438070 Fax: +351.22.9420823 e-mail: aber@aber.pt <http://www.aber.pt>