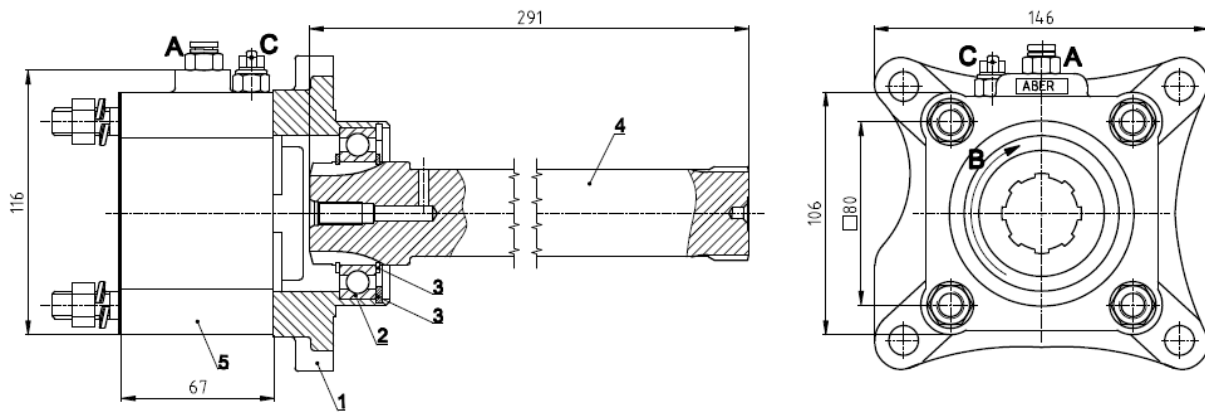




Power Take Offs Relation 1 : 1		Ref. TF5005SP
VOLVO	R1000 IT ; SR1000 IT ; R1400 IT ; R1700 IT ; SR1400 IT ; SR1700 IT ; SR1900 IT ; SR2000 IT ; SR2400 IT ; SRO2400 IT ; VT1708 IT ; VT2009B IT ; VT2014B IT ; VT2214 IT ; VT2412B IT ; VT2514B IT ; VTO2214B IT ; VTO2514B IT ; VT2814B IT ; VTO2814B IT	

To apply with Gear Pumps or with Piston Pumps

Main Dimensions



- A – Air connection
- B – Pump rotation
- C – Option: Electric sensor with mechanical driving Ref. TF5005SPS or TF5005SPC
- 1 – Flange
- 2 – Bearing
- 3 – Circlip
- 4 – Adapter shaft VK5005
- 5 – TF4002SP

(Dimensions in mm)

Main Data

Continuous Torque (Nm)	300	
Intermittent Torque (Nm)	420	
Power (at 1000 rpm)	42 cv / 32 kW	
Mounting Position	Rear	
Pump Rotation	Left Hand	
Weight (kg)	9	
PTO internal ratio	1:1	
Indicative ratio from motor to PTO's output		
R 1000 IT ; R 1400 IT ; R 1700 IT ; VT1708 IT ; VT2009B IT	.- 1 : 0.700	
SR 1400 IT ; SR 1700 IT ; SR 1900 IT ; VT2014B IT ; VT2214 IT ; VT2514B IT	High: .- 1 : 0.880	Normal: .- 1 : 0.700
SR 2000 IT	High: .- 1 : 0.820	Normal: .- 1 : 1.650
SRO 2400 IT	High: .- 1 : 1.030	Normal: .- 1 : 0.820
VT2412B IT	High: .- 1 : 0.903	Normal: .- 1 : 0.700
VTO2214B IT ; VTO2514B IT	High: .- 1 : 1.094	Normal: .- 1 : 0.880

ABER is constantly engaged in improving its products and, therefore, reserves itself the right to modify without any further notice the characteristics shown. The gear boxes are in constant change; therefore, ABER is not to be held responsible for any damage resulting from wrong application or application of outdated material.



ABER - Embragens e Comandos Hidráulicos - A. B. LDA
 Rua Francisco de Almeida, Nº 30 – Vila Nova da Telha – 4470 MAIA - Portugal
 Telephone: +351.22.9438070 Fax: +351.22.9420823 e-mail: aber@aber.pt <http://www.aber.pt>