



## Power Take Offs

Relation 1 : 1

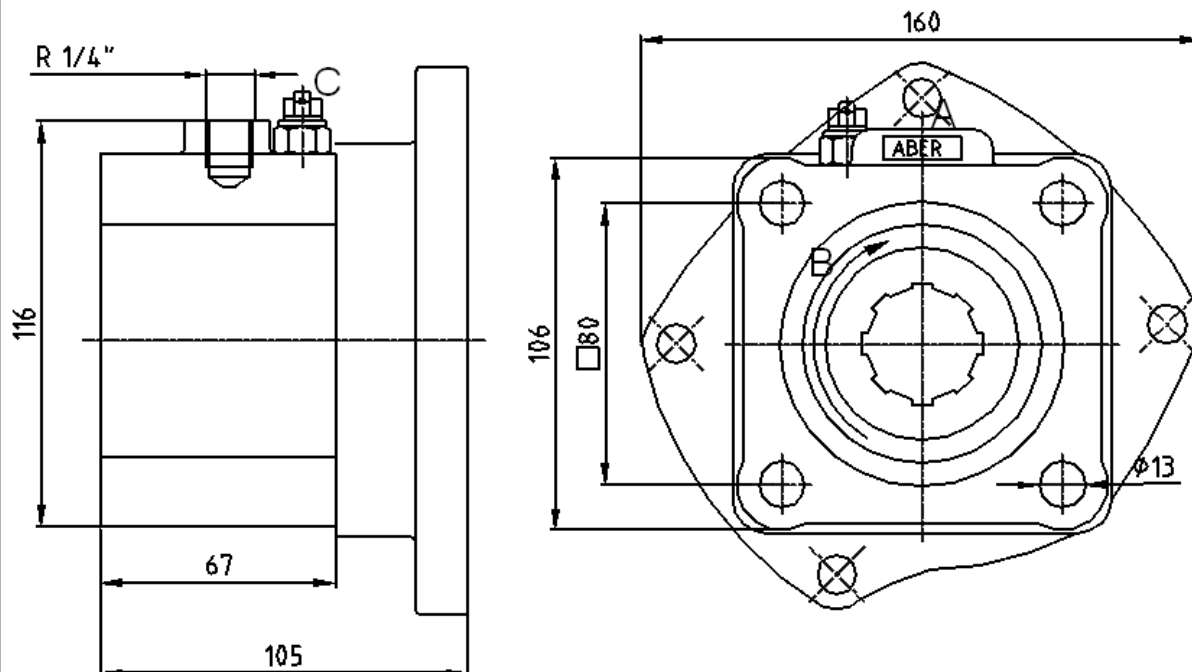
Ref. TF5001SP

**VOLVO**

R50 ; R51 ; R52 ; SR52

**To apply with Gear pumps or with Piston Pumps**

### Main Dimensions



A – Air connection

B – Pump rotation

C – Option: Electric sensor with mechanical driving Ref. TF5001SPS or TF5001SPC

(Dimensions in mm)

### Main Data

<b>Continuous Torque (Nm)</b>	<b>300</b>
<b>Intermittent Torque (Nm)</b>	<b>420</b>
<b>Power (at 1000 rpm)</b>	<b>42 cv / 32 kW</b>
<b>Mounting Position</b>	<b>Up</b>
<b>Pump Rotation</b>	<b>Left Hand</b>
<b>Weight (kg)</b>	<b>5,8</b>
<b>PTO internal ratio</b>	<b>1:1</b>
<b>Indicative ratio from motor to PTO's output</b>	
R50 ; R51 ; R52 ; SR 52	1 : 0.576

CTI TF5001SP 1211- 3

ABER is constantly engaged in improving its products and, therefore, reserves itself the right to modify without any further notice the characteristics shown. The gear boxes are in constant change; therefore, ABER is not to be held responsible for any damage resulting from wrong application or application of outdated material.



**ABER - Embragens e Comandos Hidráulicos - A. B. LDA**

Rua Francisco de Almeida, Nº 30 – Vila Nova da Telha – 4470 MAIA - Portugal

Telephone: +351.22.9438070 Fax: +351.22.9420823 e-mail: [aber@aber.pt](mailto:aber@aber.pt) <http://www.aber.pt>

1/1