



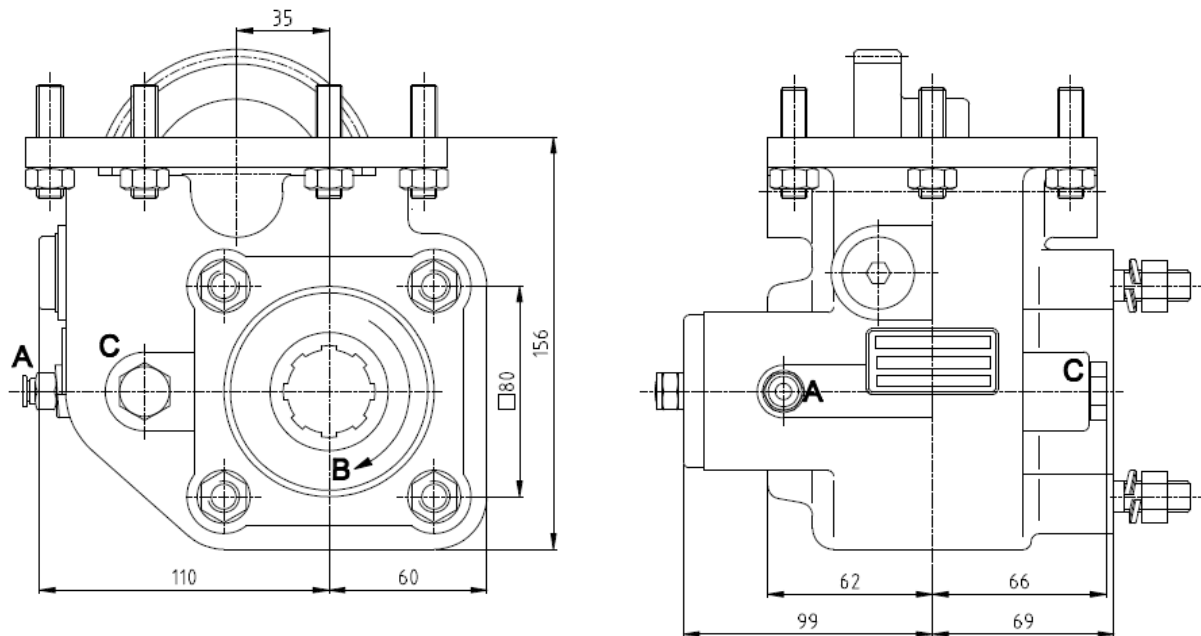
## Power Take Offs

Ref. TF3008P

ISUZU

MYY – 5T ; MYY – 6S Pneumatic control

### Main Dimensions



A – Air connection

B – Pump rotation

C – Option: Electric sensor with mechanical driving Ref. TF3008PS or TF3008PC

**(Dimensions in mm)**

### Main Data

Continuous Torque (Nm)	300
Intermittent Torque (Nm)	420
Power (at 1000 r.p.m)	42 C.V. / 32 Kw
Mounting Position	Left
Pump Rotation	Left Hand
Weight (Kg)	11
PTO internal ratio	1:1
Indicative ratio from motor to PTO's output	1:0,7