



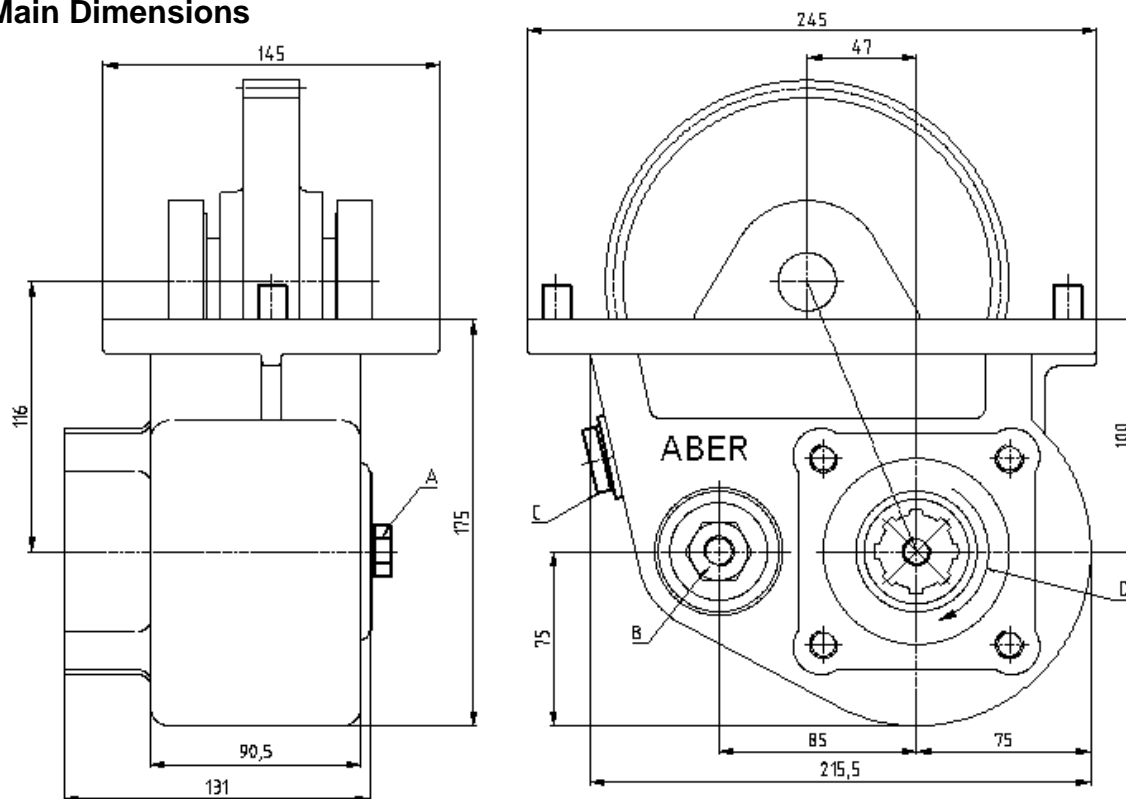
## Power Take Offs

Ref. TF14003P

RENAULT

B9.150 ; B18.150

### Main Dimensions



A – Option: Electric sensor with mechanical driving Ref. TF14003PS or TF14003PC

B – Air connection

C – Backlash check plug

D – Pump rotation

(Dimensions in mm)

### Main Data

Continuous Torque (Nm)	380
Intermittent Torque (Nm)	530
Power (at 1000 rpm)	53 cv / 39 kW
Mounting Position	Right
Pump Rotation	Left Hand
Weight (kg)	19
PTO internal ratio	1:1,56
Indicative ratio from motor to PTO's output	
B9.150	.- 1 : 1.26
B18 Normal	.- 1 : 1.26
B18 High	.- 1 : 1.46

CTI TF14003P 1211-2

ABER is constantly engaged in improving its products and, therefore, reserves itself the right to modify without any further notice the characteristics shown. The gear boxes are in constant change; therefore, ABER is not to be held responsible for any damage resulting from wrong application or application of outdated material.



ABER - Embraiaçes e Comandos Hidráulicos - A. B. LDA

Rua Francisco de Almeida, Nº 30 – Vila Nova da Telha – 4470 MAIA - Portugal

Telephone: +351.22.9438070 Fax: +351.22.9420823 e-mail: [aber@aber.pt](mailto:aber@aber.pt) <http://www.aber.pt>

1/1