



Power Take Offs

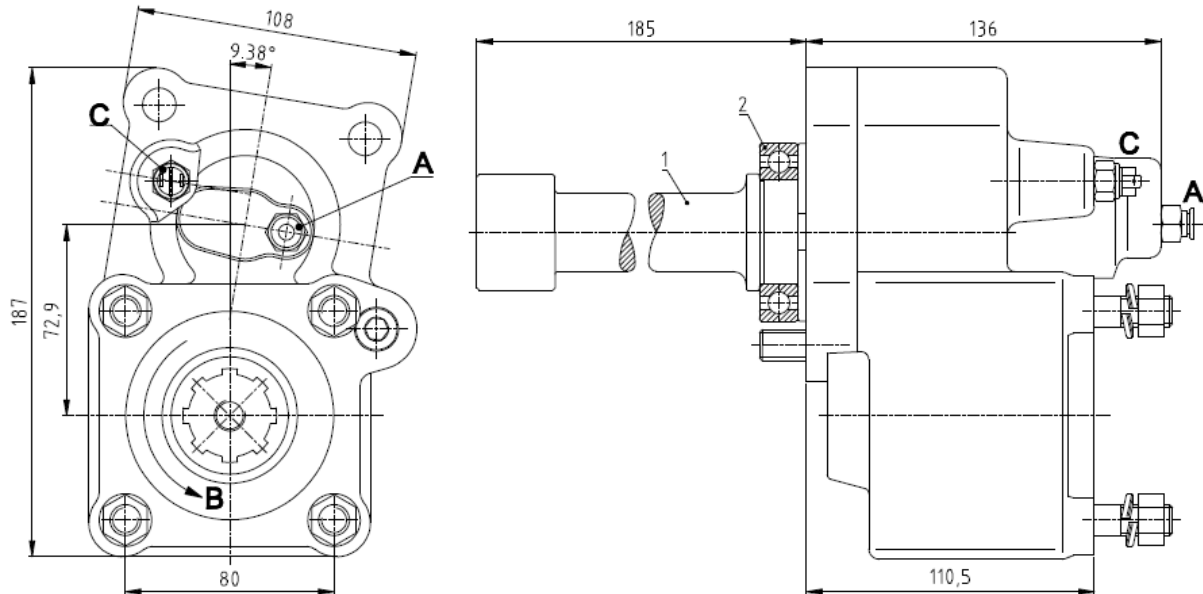
Relation 1 : 1,35

Ref. TF11004P

IVECO

2895.9 (after 11/02/1998)

Main Dimensions



A – Air connection

B – Pump rotation

C – Option: Electric sensor with mechanical driving Ref. TF11004PS or TF11004PC

1 – Adapter shaft VK11004

2 – Bearing

(Dimensions in mm)

Main Data

Continuous Torque (Nm)	300
Intermittent Torque (Nm)	420
Power (at 1000 rpm)	42 cv / 32 kW
Mounting Position	Rear
Pump Rotation	Right Hand
Weight (kg)	11,3
PTO internal ratio	1:1,35
Indicative ratio from motor to PTO's output	1:1,04